



Development & Growth in Northern Sweden

Robert Orttung, rorttung@gwu.edu
Zoe Garbis, zoegarbis@gwu.edu



THE GEORGE
WASHINGTON
UNIVERSITY
WASHINGTON, DC



Research Questions

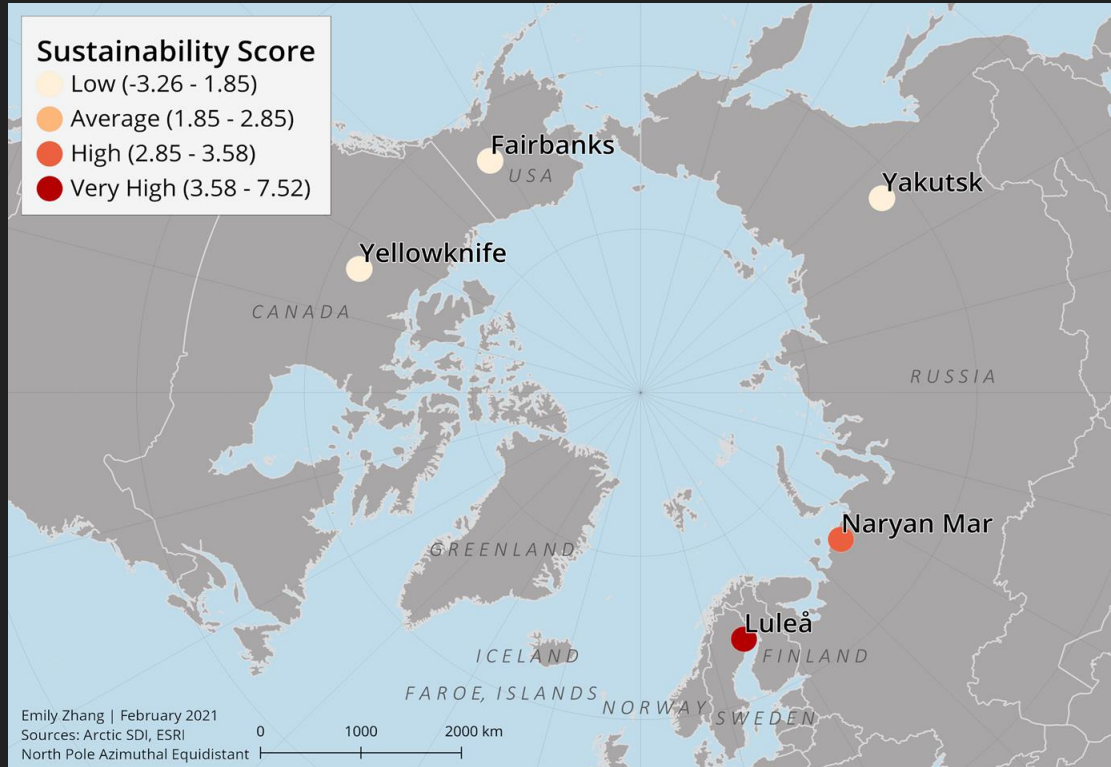
What is the source of the current impetus for growth in Sweden's north?

Which challenges will municipalities and industries face in achieving it?

In the long-term, can the demands of the region's green transition be met sustainably? If so, what conditions must be met?

Measuring Urban Sustainability in Transition (MUST)

www.arcticmust.org





Why growth? Why now?

Why must the municipality grow?

1. Expand the income tax base
2. Replenish an aging workforce
3. Reach a critical population mass to become a thriving city

What/who is driving this growth?

- Political desire for growth perpetuates
 - Historical political idea
 - Demographics problem in the north
- Industry needs for new competence



Conditions Necessary for Growth

Industrial Expansion



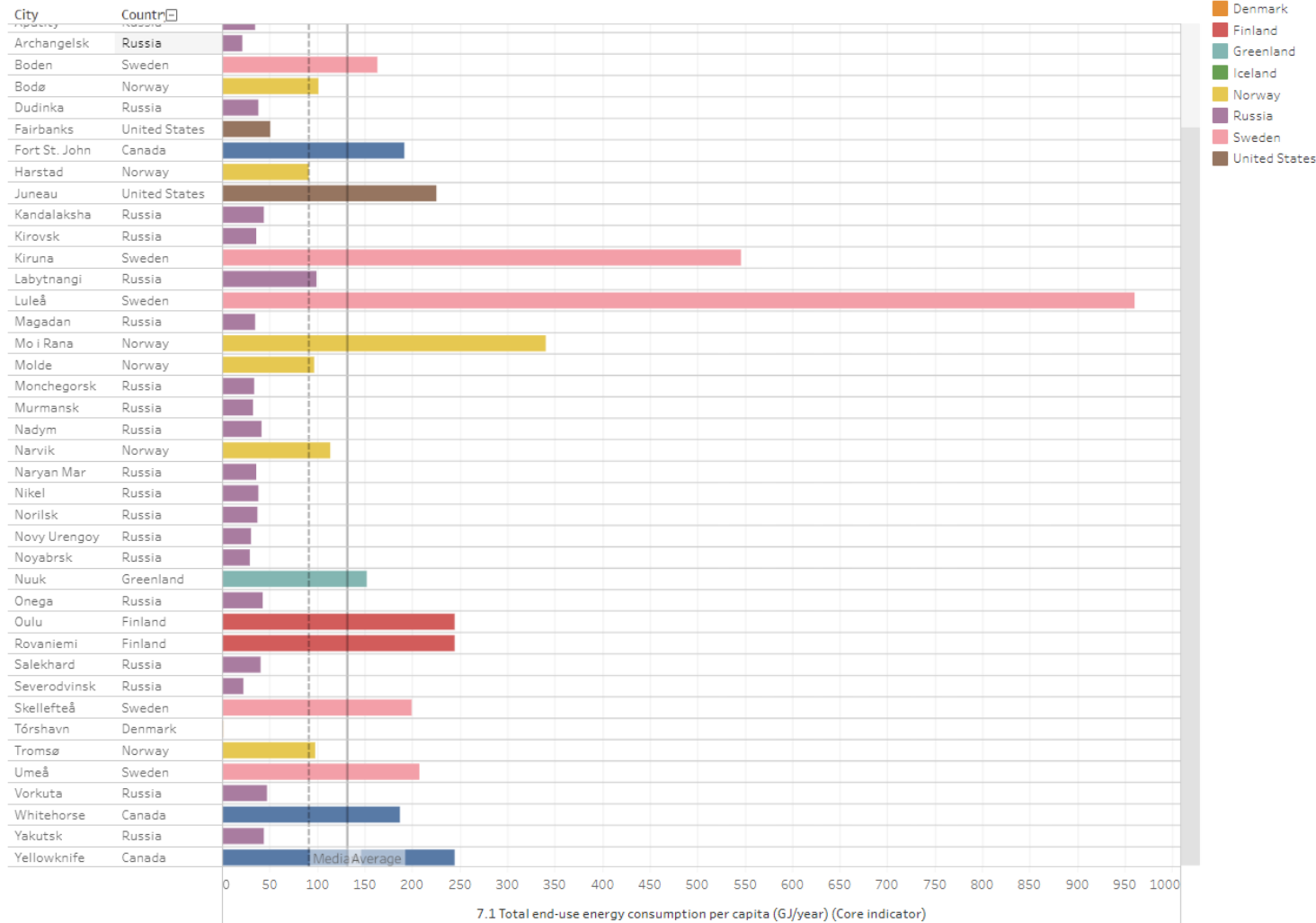
Migration & Labor



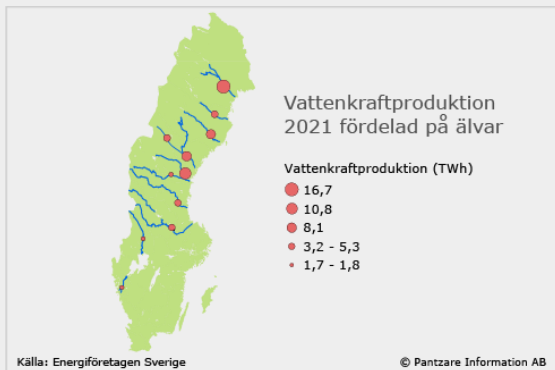
Housing & Infrastructure



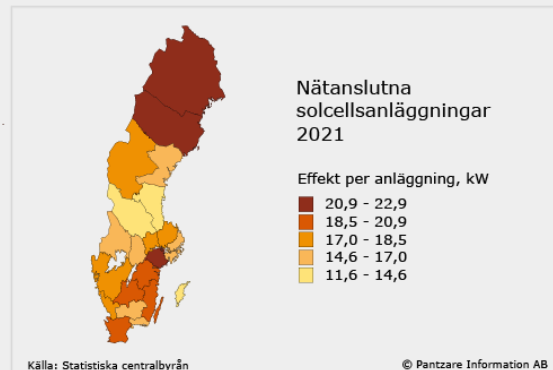
7.1 Total end-use energy consumption per capita (GJ/year)



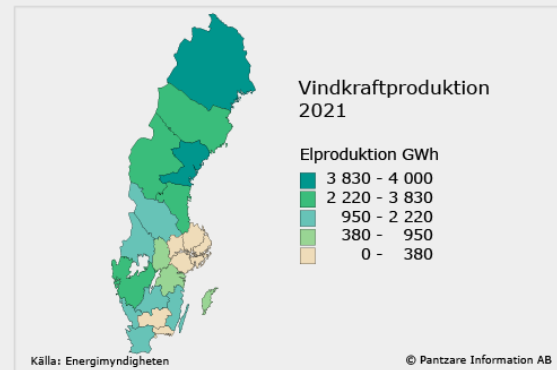
Where will the energy come from?



Hydropower production by river



Solar connected to energy grid



Wind power production



Contact

Robert Orttung, Research Professor of International Affairs & Director of Research at the GW Sustainability Institute - rorttung@gwu.edu

Zoe Garbis, Researcher, MUST - zoegarbis@gwu.edu

Jacob Tafrate, Graduate Student, Geography Dept. - jtafrate@gwu.edu