



Development & Growth in Northern Sweden

Robert Orttung, rorttung@gwu.edu
Zoe Garbis, zoegarbis@gwu.edu
Jacob Tafarate, jtafirate@gwu.edu



THE GEORGE
WASHINGTON
UNIVERSITY
WASHINGTON, DC



Research Questions

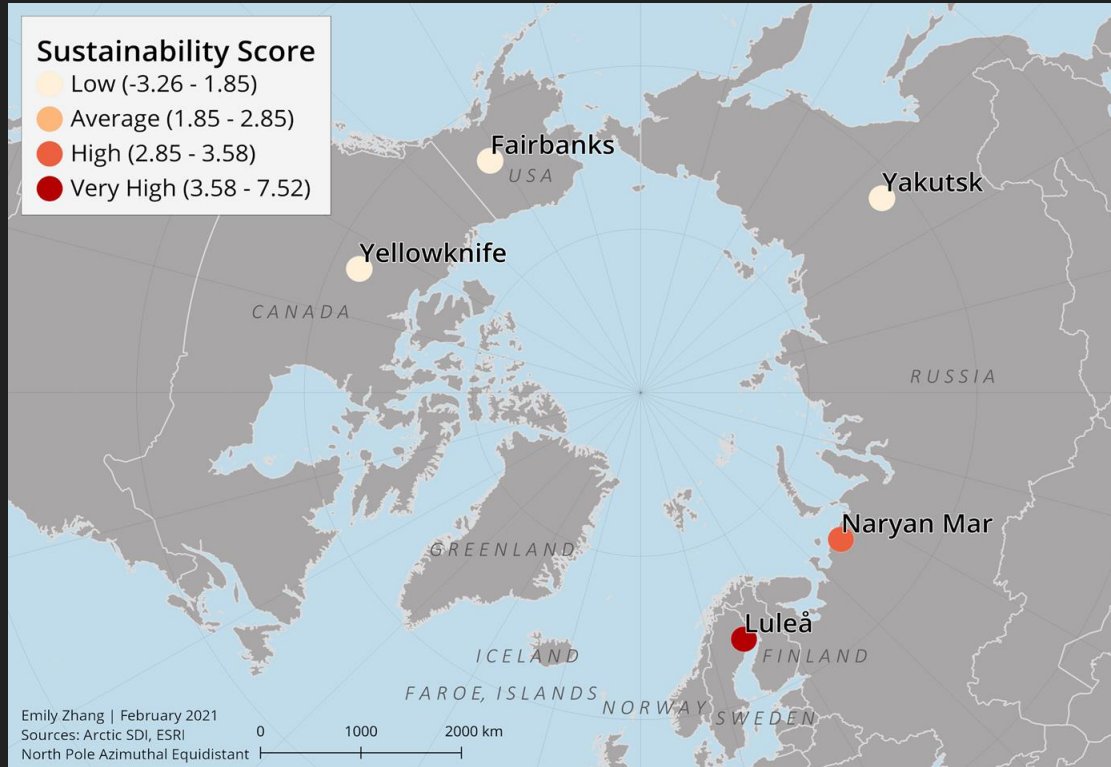
What is the source of the current impetus for growth in Sweden's north?

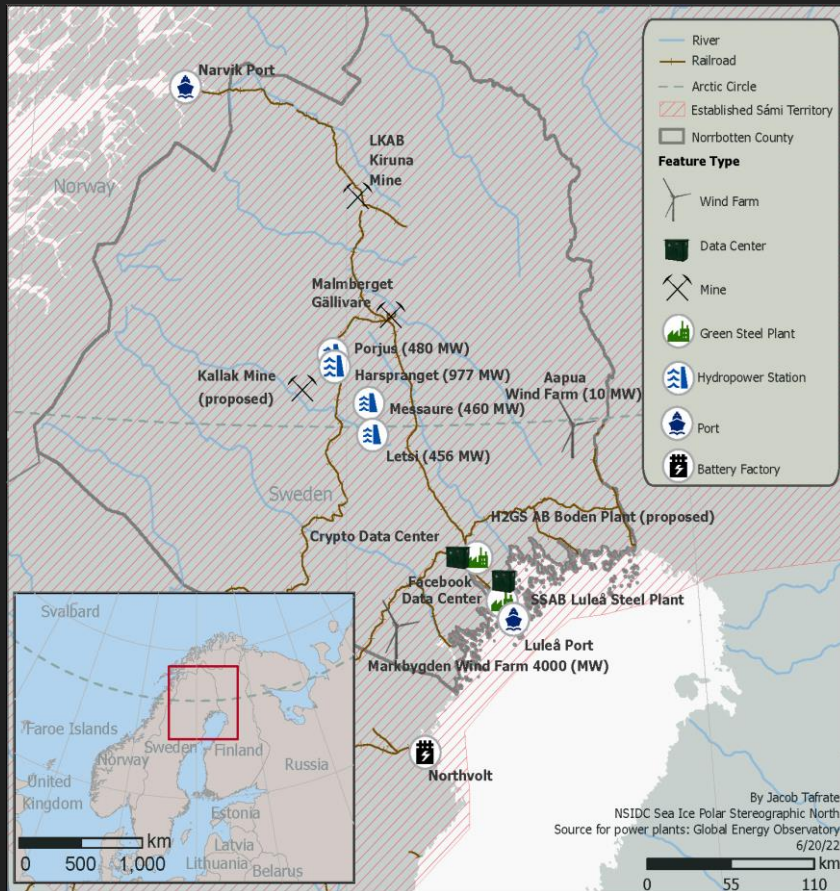
Which challenges will municipalities and industries face in achieving it?

In the long-term, can the demands of the region's green transition be met sustainably? If so, what conditions must be met?

Measuring Urban Sustainability in Transition (MUST)

www.arcticmust.org





Conditions Necessary for Growth

Industrial Expansion



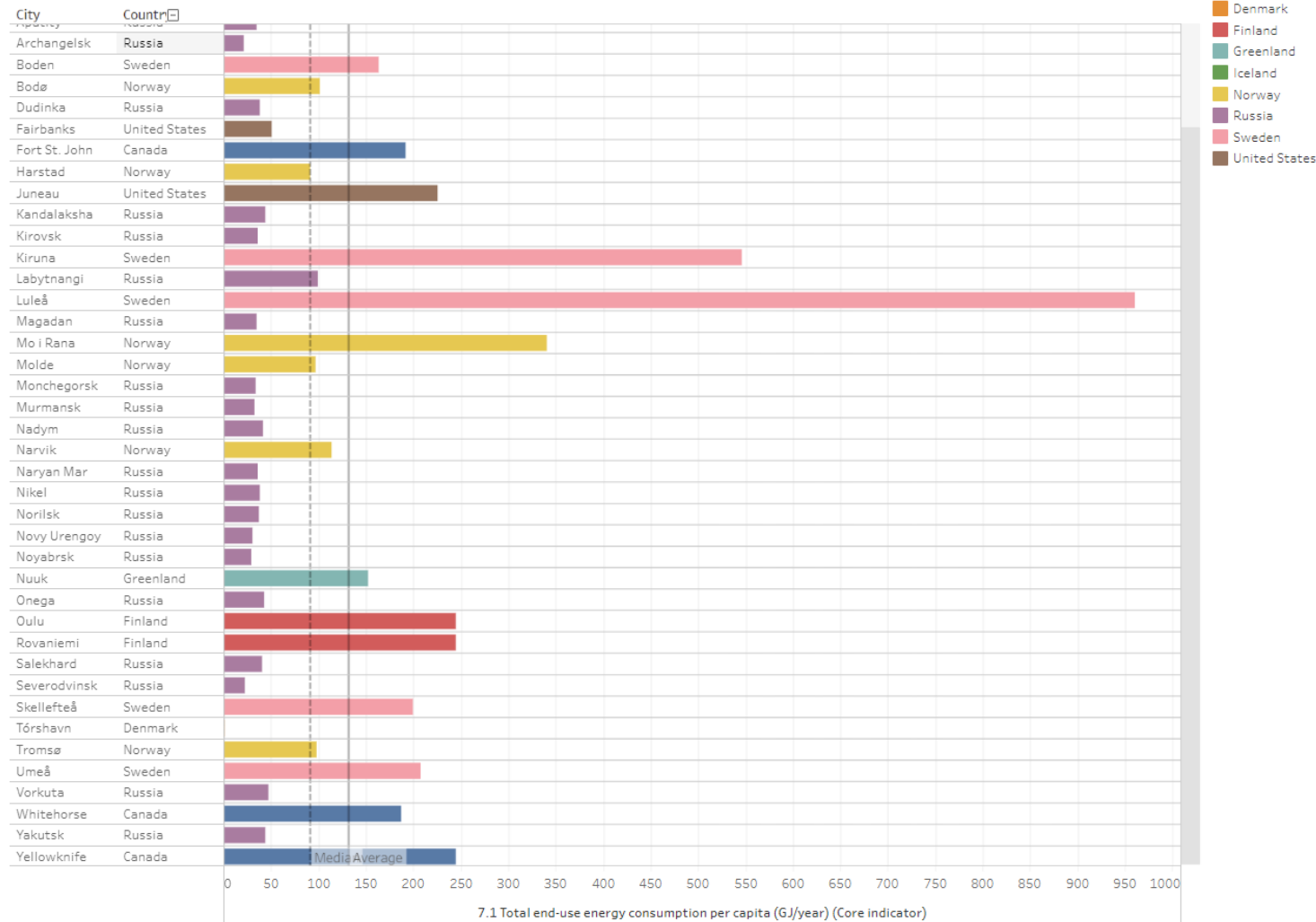
Migration & Labor



Housing & Infrastructure



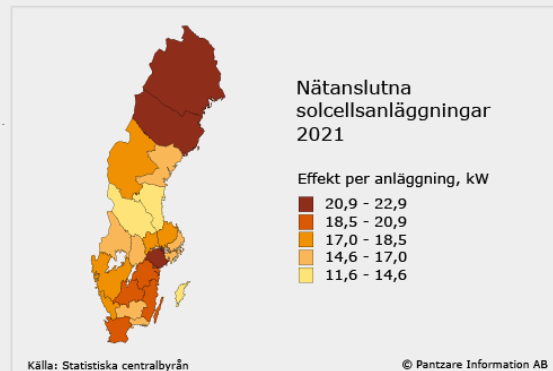
7.1 Total end-use energy consumption per capita (GJ/year)



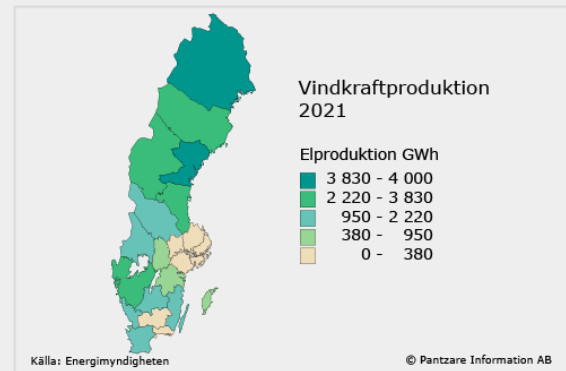
Where will the energy come from?



Hydropower production by river



Solar connected to energy grid



Wind power production



Contact

Robert Orttung, Research Professor of International Affairs & Director of Research at GW Sustainability Institute - rorttung@gwu.edu

Zoe Garbis, Researcher, MUST - zoegarbis@gwu.edu

Jacob Tafrate, Graduate Research Assistant, Geography, George Washington University - jtafrate@gwu.edu