



GTC
GWICH'IN TRIBAL COUNCIL

Inuvik Wind Project

Grand Chief Ken Kyikavichik
June 15, 2022

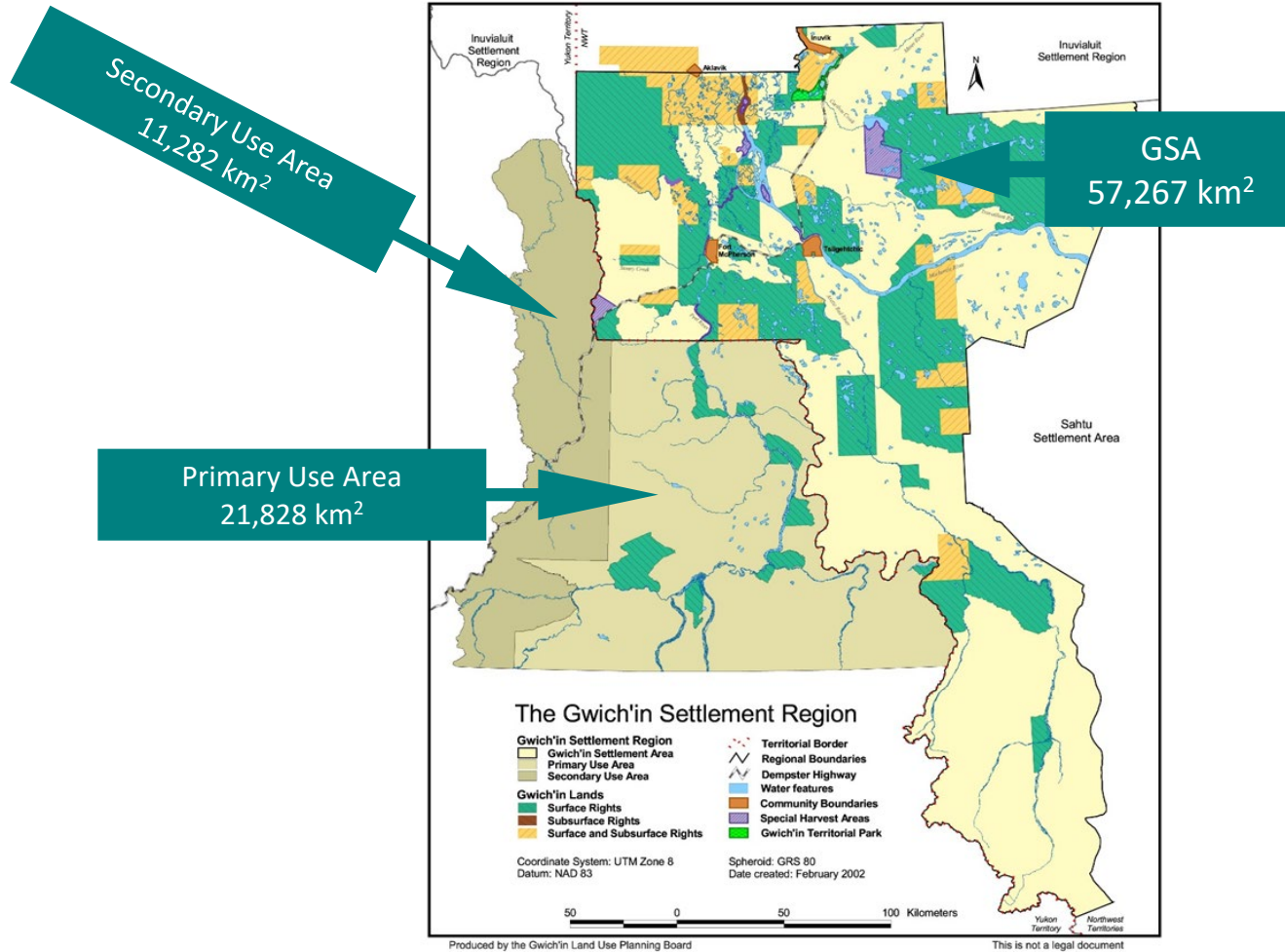




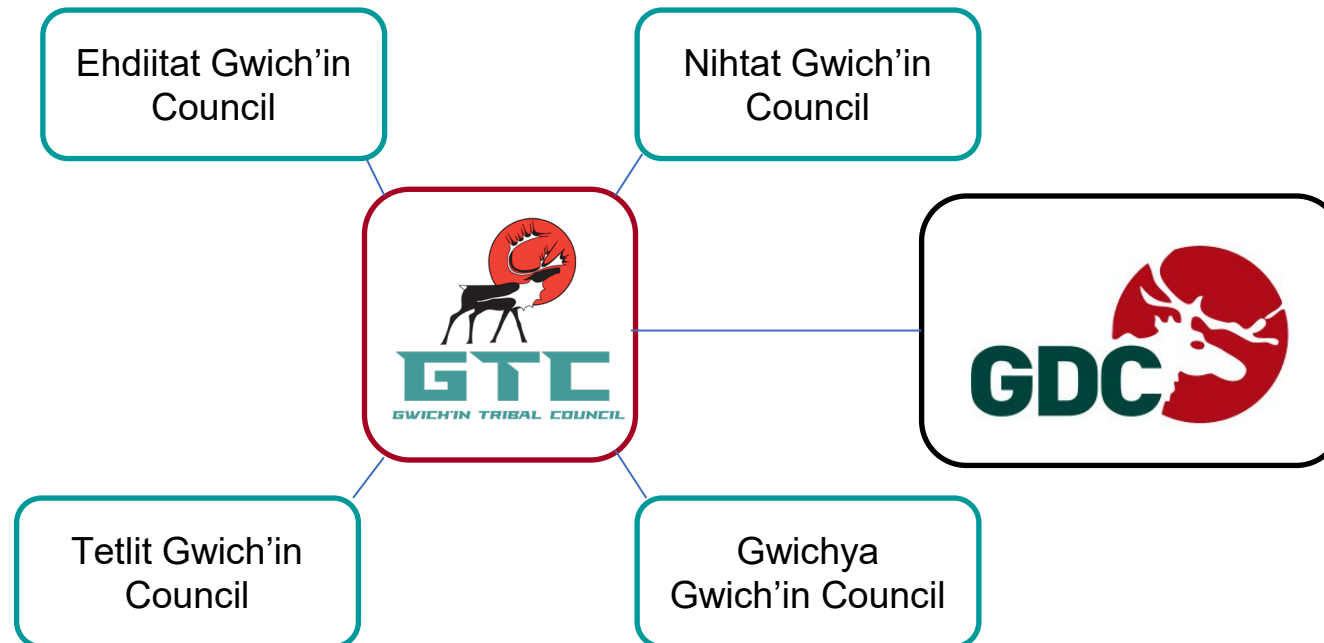
Gwich'in Tribal Council

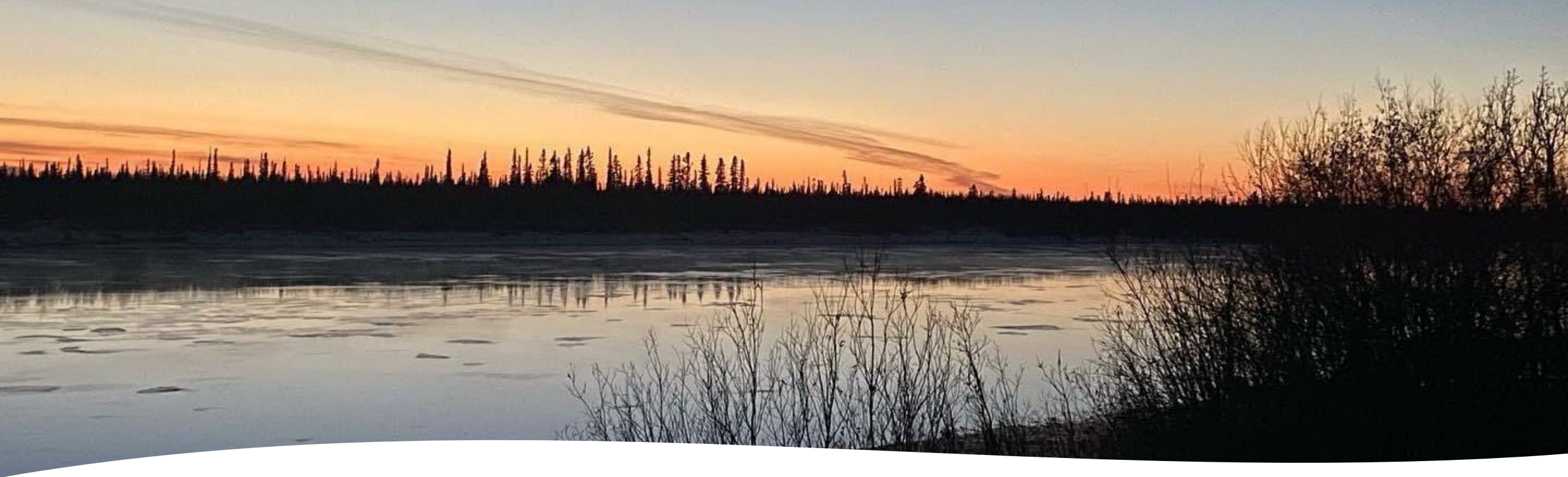
- Gwich'in Tribal Council (GTC) is the overarching organization that represents the Gwich'in Nation of the Northwest Territories; created in 1992 with the signing of the Gwich'in Comprehensive Land Claim Agreement (GCLCA).
- The GTC's head office is located in the Jim Koe Building in Inuvik and we also maintain an office in the Charles Koe Building in Teetl'it Zheh.
- Designated Gwich'in Organizations (DGO's)/Gwich'in Councils are located in each Gwich'in community. The Gwich'in Councils each appoint two (2) persons to the Board of Directors.
- The Executive is composed of the Grand Chief which is elected every four (4) years.
- The Leadership Team of the GTC consists of a Grand Chief, Chief Executive Officer, Chief Operating Officer and Chief Financial Officer.

Gwich'in Lands



Organizational Structure





Key Objectives

- Protect and preserve the rights, interest and benefits of the Gwich'in under Treaty 11, the *Constitution Act* and the Gwich'in Comprehensive Land Claim Agreement (GCLCA);
- Overseeing the use, ownership and management of lands, waters, and resources in the Gwich'in Settlement Region;
- Retain, preserve and enhance the traditional and cultural values, customs and language of the Gwich'in in a changing society;
- Develop and promote economic, social, educational and cultural programs that will enable the Gwich'in to become self-sufficient and full participating members in a global society; and,
- Receive, preserve and enhance the capital and the lands and other benefits transferred to the Gwich'in pursuant to the GCLCA which was signed on April 22, 1992 in Teetl'it Zheh (Fort McPherson, NT).

Chronology

- 2016-2018 Engagements underway by the Northwest Territories Energy Corporation.
- 2019 Correspondence from the Nihtat Gwich'in Council to the GNWT indicating a failure to consult and concerns around administrative 'reservation by notation' process employed by the GNWT Department of Lands.
- Nov. 2020 Judicial Review filed by the Nihtat Gwich'in Council on permits and authorizations received by the Inuvik Wind Project citing issues and concerns with: (1) consultation (2) impacts to reindeer grazing and (3) reservation by notation process.
- Jan. 2021 Decision by Nihtat Gwich'in Council AGA to discontinue judicial review.

What was done right

- **Engagement – Early, frequent and often**
 - Started in 2016 almost 6 years before the project was commenced
 - Intensive engagement between 2016 and 2018 with various parties that is reflected on the record with the Gwich'in Land and Water Board
- **Inclusion**
 - Hiring of a Gwich'in business – Nihtat Corporation/Hemmera Envirochem – to complete the environmental assessment
 - Completion of a Traditional Knowledge Study
 - Communication of Business Opportunities by the NWT Energy Corporation
- **Respect**
 - Engaging with both the regional Gwich'in Tribal Council and local Nihtat Gwich'in Council rightsholders
 - Advising of activities with other local stakeholders such as the Town of Inuvik and Inuvialuit Regional Corporation

What is happening now?

- Work commenced in February of 2022.
- Being completed by Northland Builders Ltd. in collaboration with other Gwich'in businesses such as Bob's Welding Ltd., Nanzu Environmental, Nehtr'uh EBA Consulting and Deetrin Geomatics.
- Directly negotiated contract – Gwich'in 'Set-Aside' Process





Learnings for the GTC

- The need for centralization of the engagement/consultation and limited business opportunities that occur in the Gwich'in Settlement Region.
- Confirmation of those who claim or represent to be speaking on behalf of the Gwich'in or its communities for any projects within the Gwich'in Settlement Region.
- Importance of bringing forward private business interests and having the collective Gwich'in Development Corporation fill in the gaps or provide services that are not being provided in the region currently.



Other Climate Change Initiatives

- 2014 – **University of Victoria** – community based mapping project that assessed the climate driven impacts in the Peel River Watershed
- **Gwich'in Wellness Camp** – retrofit to optimize the camp's energy demands to improve operating efficiency
- **Community Appropriate Sustainable Energy Security (CASES)** – multi-party effort to review and assess renewable energy solutions for Northern and Indigenous communities across the Circumpolar North

*Gwich'in nan, nakhwek'yùu ts'àt gwitr'it
tthak nakhwidavee gwiheezàa eenjit*

*Gwich'in land, culture & economy for a
better future*



PO Box 1509 Inuvik NT X0E 0T0 Ph: 867-777-7900 Fx: 867-777-7919
www.gwichintribal.ca